

D A W B I N

ARCHITECTS PTY LTD

EVELEIGH CARRIAGEWORKS



ARCHIVAL RECORDING

**STORES 1, 2, 3, & 4, CARRIAGE SHOP
EXTENSION AND BOILERMAKERS SHOP**

Prior to Proposed Demolition

FOR NSW RAILCORP

8 March 2009

CONTENTS

Introduction	1
PART 1 –Historical Background	3
PART 2 –Statement of Significance	7
PART 3 - Photographic recording in digital format (contact sheet)	8
PART 4 - Measured drawings of Building in CAD format	9

INTRODUCTION

This archival recording was prepared in conjunction with a Development Application for demolition of the former stores complex and workshops within the western precinct of the former Eveleigh Carriageworks. The Redfern-Waterloo Authority as the consent authority requires an archival survey of the site prior to commencement of construction works.

This record has been prepared in accordance with the NSW Heritage Office guideline, *How to Prepare Archival Records of Heritage Items*. It was prepared in conjunction with a Heritage Impact Statement with respect to the proposed demolition.

Historical Background and Statement of Significance

The Historical Background and Statement of Significance were reproduced from the Heritage Impact Statement prepared by Dawbin Architects in December 2008 for the proposed demolition of the store complex and workshops. *Eveleigh Carriageworks* (Otto Cserhalmi 2002), Ray Iove and David Kennedy are acknowledged for their contribution to the historical notes.

Photographic recording

Photographic recording included the interior and exterior of the building complex and surrounding areas of the site. A comprehensive photographic survey was undertaken between September 2008 and February 2009.

Contact sheets of all numbered reference photographs were prepared for each of the internal spaces in turn. External elevations and exterior detail were recorded, commencing at the north eastern corner of the Carriage Shop Extension and concluding at the south western corner of Store #4, in an anti-clockwise direction.

Technical details of photographic equipment.

Camera Nikon D60 single lens reflex digital camera
 10.2 Megapixels
 Image size, all images 3,872 x 2,592
 Lens AF-5 Nikkor 18-135mm

File format: JPEG

Reference Plans

A3 reference drawings have been marked up with the location and direction of view of each individual photograph, and include:

- Site Plan, external views
- Floor Plan, Boiler Shop and Carriage Shop Extension
- Plan, Boiler Shop Amenities Annexe
- Plan, Stores 1, 2, 3, and 4

Measured Drawings

Measured drawings record the building in its configuration and condition as observed and recorded on site in November 2008.

The drawings comprise:

- 01 Survey (Site Plan)
- 02 Floor Plan Boilermakers Shop and Carriage Shop Extension
- 03 Plan Boilermakers Shop Amenities Annexe
- 04 Plan Stores 1, 2, 3, and 4
- 05 Elevations 1
- 06 Elevations 2
- 07 Sections

Drawings are Autocad R2007 format drawn to a scale of 1:100 at A1 sheet size, converted to PDF files.

Client

The Client was NSW RailCorp, and the client representative was Fiona Christiansen

Authorship

The author and photographer was Bruce Dawbin, NSW Registered Architect # 3723 of Dawbin Architects Pty Ltd, Architects and Heritage Consultants

Measured drawings were prepared by Peter Chan.

Location Plan



*Eveleigh Carriageworks, Western precinct
Aerial view of subject buildings (Photograph: Robert Bird Group)*

PART 1- HISTORICAL BACKGROUND

In 1879 the Chisholm Estate was purchased for 10,000 pounds for construction of new railway workshops to replace the existing cramped facilities adjacent to Sydney Railway Yard. 23.2 hectares of undeveloped land was located to the west of Eveleigh Station near the site of the present Redfern Station. In 1880, 250,000 pounds was voted by Parliament for the construction and fitting out of the new workshops.

The NSW Railways Annual Report of 1881 described the general arrangement of the proposed Eveleigh Railway Workshops complex, and included the earliest reference to railway stores.

'The workshops will be situated on both sides of the line between Eveleigh and Macdonald Town, the area set apart for them being about 60 acres.... The locomotive works, running sheds, and shunting yards etc will be situated on the eastern side of the main lines, while the carriage and wagon shops and the general railway stores will be situated on the western side'.

Stores Nos 1 and 2, 1883

The present Stores Buildings 1 and 2 were described in the Annual Report of 1881:

'The general Railway Stores which are now being constructed will consist of one main building 200 feet x 50 feet, and one open shed also 200 feet x 50 feet, also detached office buildings for the storekeeper and his staff. The stores will be fitted up in the most convenient manner, and will communicate with the main lines and workshops by means of sidings and turntables'

A site plan of the entire complex was included in the report, indicating the two stores buildings at the extreme western area of the carriageworks site. The two buildings are shown to be separated by two railway sidings which connect into the rail network linking the workshops to the stores facility for the transfer of tools and supplies around all areas of the site. This first stage of the Eveleigh workshops complex was constructed in 1883, and *'the new office and stores were completed during 1883 and they were fitted with water and gas. Three water closets and urinals were also erected for the Stores Branch. The stores were fitted with a 3 ton and 10 ton crane and a box was erected for the 'store watchman'. A new oil store and platform were completed, as well as some further temporary platforms. These were all timber buildings.*

Sidings were also laid to the stores and two small wagon turntables fixed. Further sidings were also laid along almost the entire length of the site and new turntables, cranes and platforms were also erected. All of these would have been provided to handle the loading and unloading of wagons.'

A timber platform supported on arched brickwork extended the full length of Store 1, providing loading facilities onto the two sidings in the open area between the two stores.

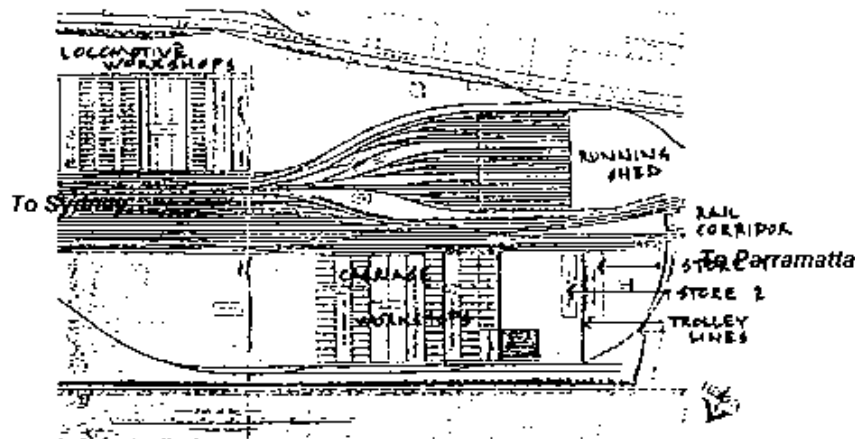
In 1884 the stores were provided with a rail link to the locomotive workshops at the southern area of the site via a subway under the main running lines. Inclined sidings and wagon turntables connected the southern end of the stores with the subway. Remnants of the subway remain to the present day, although it was altered to allow for the Illawarra Dive tunnel. The Illawarra signal box was constructed in 1885 which either straddled this siding or was located adjacent the line, close to the stores.

In 1926, an awning was constructed between Stores 1 and 2 to provide shelter for loading on the outdoor platforms

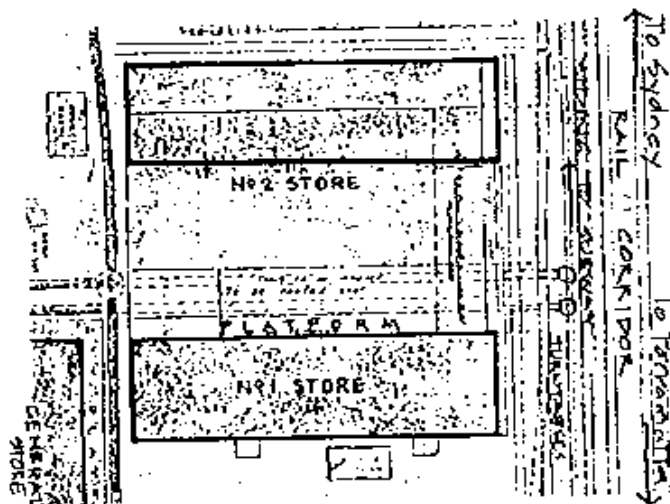
¹ CMP 2002 p43

In the last 6 to 7 years of operation, Stores #1 and #2 were used for seat repairs and blind repairs by trimmers and upholsterer trades, and some areas were used for building sections of cars on work benches.

The Store facility functioned until the end of the Carriageworks era, supplying material components and mouldings, fittings for cars and tools for distribution throughout the workshops.



NSW Railways Annual Report 1881, Original structures on the Eveleigh Workshops site: Stores 1 and 2 at western end of site



Stores buildings 1 and 2 in 1926 before connection by Store 3. The buildings are detached at this stage with two sidings in the open courtyard between, and platform providing trolley access to the entire workshops site, including Locomotive Workshops via subway.

Carriage Shop Extension 1911-12

Major expansion to the workshops complex between 1907 and 1914 was necessary to cope with increasing demand and the increase in new carriages and conversions of existing stock. New facilities constructed at the western area of the Carriage Works in 1912 included the Carriage Shop extension (also widely known as the Carriage Works Paddock) and in 1913 the Clothing Store, a two storey brick building of substantial and superior design. These buildings represented the last of substantial permanent masonry buildings constructed at North Eveleigh.

The southern side of the Carriage Shop Extension faced running tracks on the same alignment as the main carriage workshops. This façade was constructed in articulated brickwork, of matching quality to earlier buildings on the site, intended to preserve or augment the architectural standard of the site when viewed from the main line. The sawtooth roof profile however differed from the regular gable profile of the earlier workshops. The other elevations were considered of lesser priority and were originally open sided. The building originally contained 5 tracks, which extended into the open space adjacent to Building 6. An extension of one bay to the west in 1916-17 fully enclosed these sidings, and three tracks were added to the north. The southern façade of the extension was detailed to match exactly the existing brick work, and allowed for further extension to the west which was never built.



Carriage conversions carried out in the Carriage Shop Extension, view to west.

A timber shed constructed circa 1895 (Building 11) was located immediately to the north of the Carriage Works extension and was retained for the storage of timber used in the workshops.

The building was used primarily for major repair and the extensive conversion program underway during the expansion and modernisation of the railways during the 1920's- 30's which included electric suburban cars, improved express passenger cars and steady transition to steel carriage construction. The wagon building and repair facility relocated to Chullora and Clyde during this period and Eveleigh was exclusively dedicated as a carriage workshop.

The operations of the Carriage Shop Extension included work to mail and brake vans and repairs to collision damaged cars. Following electrification of the suburban system after 1927,

many timber cars were converted for country and tourist use. Box cars were converted to corridor and the construction of sleeping cars for long haul expresses expanded. The program of conversions rapidly accelerated during World War 2 providing special purpose vehicles, including recruiting cars for the military, ambulance, dental and medical cars.

In later years the building was used as a paint shop and cable store.

Store No 3, 1926

This building was constructed to enclose the link between Stores 1 and 2. The platform was removed and the two sidings were removed and sealed over. Later a new siding with side jacking rails provided rail access to the Stores and spray painting facility. Construction of the roof framing to Store 3 was king post trusses similar to Store 1.

Also in 1926, the southern end of the 3 store buildings was shortened to allow for the widening of the main line resulting from quadruplication of the western line as far as Homebush.

An open awning extension to the full length of the eastern side of Building 2 constructed in 1895 was demolished in 1926 to make way for the extension to the rear of the Carriage Works Extension.

Store No 4, 1937

Further major expansion occurred in 1937 with the construction of Store #4. This steel framed building extended the full length of the western side of Store #1 and also resulted in demolition of a range of outbuildings including the Stores Office and toilets. This building was also known as the CME's Paint Spray.

In later years, the building was used for repairs and rebuilding of carriage components such as light fittings, doors, door fittings and smaller parts. Application was by hand and spray painting.

The western precinct

By the late 1920's until construction of Store #4 in 1937, a number of buildings existed in the area to the west of Store #1. The Stores Office was a substantial brick building and a smaller brick building was built for the original chemical laboratory. Other outbuildings were of timber and iron construction and included several small stores and a stationery store. Traverser No 3 separated this group from the large oil store at the western extremity of the site and tramway sidings provided access to outdoor storage racks.

Boilermakers Shop, 1964

This large industrial style steel framed structure was the largest building constructed at Eveleigh during the later years. Demand for the facility arose out of the rapidly changing technology of steel and stainless steel carriage construction. Repairs and construction work on the steel carriages constructed during the late 1930's included the S and N classes exceeded the capacity of the existing workshops which were predominantly equipped for timber carriage trades. Many timber bodied carriages were converted to steel undercarriages, which greatly improved the safety and durability of country coaching stock. The new stainless steel cars built for the Southern Aurora and Gold Coast Motorail Express trains were overhauled in the facilities at North Eveleigh. The Boilermakers Shop overcame a decade long backlog in steel body repairs.

The Carriage Shop Extension (later the Cable Store) was reduced to half its floor area, from 8 to four tracks, and the Boilermakers Shop provided an extension to the north, with far greater height and internal clearances. The workshop was provided with two floor operated overhead gantry cranes.

The timber shed to the north was retained until demolition during the late 1980s. Building 11A, an open storage facility has remained in the vicinity until the present day, to the north of the car park.

PART 2 – STATEMENT OF SIGNIFICANCE

Statement of Significance

The site has been assessed for heritage significance in accordance with the NSW Heritage Significance Criteria, as above. On the basis of the Heritage Office's own guidelines for *inclusion* or *exclusion*, the buildings meet the criteria for inclusion under the following categories:

- Historical significance for the original fabric of Stores 1 and 2 dating from 1883, as the oldest surviving buildings of the Eveleigh Railway Workshops complex.
- Technical research significance for the extensive use of timber king post trusses in areas of large span.
- Aesthetic significance for the spatial quality achieved by the large interior spaces and the articulation of the roof framing.
- The landmark quality of the brickwork to the southern façade of the Carriage Shop Extension and its visual connection with the main Carriage Workshops building.

PART 3 – PHOTOGRAPHIC RECORDING

Contact Sheets and reference plans:

Drawing no	Contact sheet title
1	Exterior
2	Carriage Shop Extension
3	Boilermakers Shop and Amenities Annexe
4	Store 1
	Store 2/3
	Store 4



DSC_0898



DSC_0521



DSC_0899



DSC_0900



DSC_0857



DSC_0859



DSC_0858



DSC_0860



DSC_0861



DSC_0855



DSC_0902



DSC_0854



DSC_0903



DSC_0513



DSC_0897



DSC_0514



DSC_0515



DSC_0516

Eveleigh Carriageworks

Western Precinct - Exterior

Archival Recording Nov 2008 - Feb 2009



DSC_0906



DSC_0864



DSC_0839



DSC_0840



DSC_0866



DSC_0915



DSC_0507



DSC_0506



DSC_0865



DSC_0907



DSC_0908



DSC_0842



DSC_0843



DSC_0852



DSC_0504



DSC_0505



DSC_0846



DSC_0910

Eveleigh Camiageworks

Western Precinct - Exterior

Archival Recording Nov 2008 - Feb 2009



DSC_0911



DSC_0912



DSC_0909



DSC_0502



DSC_0913



DSC_0845



DSC_0503



DSC_0916



DSC_0850



DSC_0923



DSC_0851



DSC_0918



DSC_0919



DSC_0920



DSC_0921



DSC_0922



DSC_0509



DSC_0511

Eveleigh Carriageworks



DSC_0849

Western Precinct - Exterior



DSC_0867

Archival Recording Nov 2008 - Feb 2009



DSC_0868



DSC_0510



DSC_0869

Eveleigh Carriageworks

Carriage Shop Extension - Interior

Archival Recording Nov 2008 - Feb 2009



DSC_0823



DSC_0813



DSC_0790



DSC_0791



DSC_0779



DSC_0780



DSC_0781



DSC_0782



DSC_0784



DSC_0822



DSC_0786



DSC_0787



DSC_0788



DSC_0789



DSC_0811



DSC_0814



DSC_0816



DSC_0817

Eyeleigh Carriageworks



DSC_0818

Carriage Shop Extension - Interior



DSC_0821

Archival Recording Nov 2008 - Feb 2009

Eveleigh Carriageworks

Boilemakers Shop - Interior

Archival Recording Nov 2008 - Feb 2009



DSC_0792



DSC_0793



DSC_0795



DSC_0796



DSC_0824



DSC_0810



DSC_0825



DSC_0833



DSC_0797



DSC_0798



DSC_0826



DSC_0799



DSC_0800



DSC_0801



DSC_0802



DSC_0803



DSC_0804



DSC_0805

Eveleigh Carriageworks



DSC_0806

Boilermakers Shop - Interior



DSC_0807

Archival Recording Nov 2008 - Feb 2009



DSC_0808



DSC_0809



DSC_0769



DSC_0780



DSC_0764



DSC_0765



DSC_0766



DSC_0767



DSC_0768



DSC_0770



DSC_0771



DSC_0774



DSC_0775



DSC_0777



DSC_0778



DSC_0797



DSC_0799



DSC_0856



DSC_0857



DSC_0858



DSC_0859



DSC_0860



DSC_0862



DSC_0864



DSC_0865



DSC_0866



DSC_0867



DSC_0879



DSC_0893



DSC_0894



DSC_0896



DSC_0800



DSC_0811



DSC_0735



DSC_0736



DSC_0820



DSC 0758



DSC 0744



DSC_0737



DSC 0836



DSC 0741



DSC_0739



DSC_0740



DSC 0755



DSC_0759



DSC 0793



DSC_0742



DSC_0743



DSC_0748



DSC_0752



DSC_0753



DSC_0754



DSC_0757



DSC_0761



DSC_0762



DSC_0802



DSC_0756



DSC_0809



DSC_0810



DSC_0885



DSC_0812



DSC_0813



DSC_0814



DSC_0815



DSC_0816



DSC_0817



DSC_0818



DSC_0822

Eveleigh Carriageworks

Store 2/ 3 - Interior

Archival Recording Nov 2008 - Feb 2009



DSC_0823



DSC_0829



DSC_0830



DSC_0831



DSC_0832



DSC_0839



DSC_0833



DSC_0834



DSC_0835



DSC_0837



DSC_0839



DSC_0841



DSC_0892



DSC_0840



DSC_0842



DSC_0843



DSC_0844



DSC_0845

Eveleigh Carriageworks

Store 2/ 3 - Interior

Archival Recording Nov 2008 - Feb 2009



DSC_0846



DSC_0847



DSC_0848



DSC_0803



DSC_0804



DSC_0805



DSC_0850



DSC_0854



DSC_0855



DSC_0888



DSC_0887



DSC_0831



DSC_0882



DSC_0886



DSC_0827



DSC_0746



DSC_0828



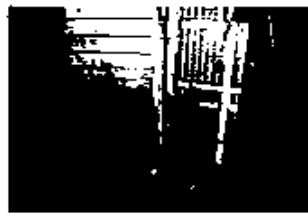
DSC_0751

Eveleigh Carriageworks



DISC_0883

Store 2/3 - Interior



DISC_0884

Archival Recording Nov 2008 - Feb 2009



DISC_0890



DISC_0891



DSC_0781



DSC_0794



DSC_0790



DSC_0873



DSC_0872



DSC_0874



DSC_0875



DSC_0876



DSC_0796



DSC_0869



DSC_0783



DSC_0784



DSC_0870



DSC_0871



DSC_0786



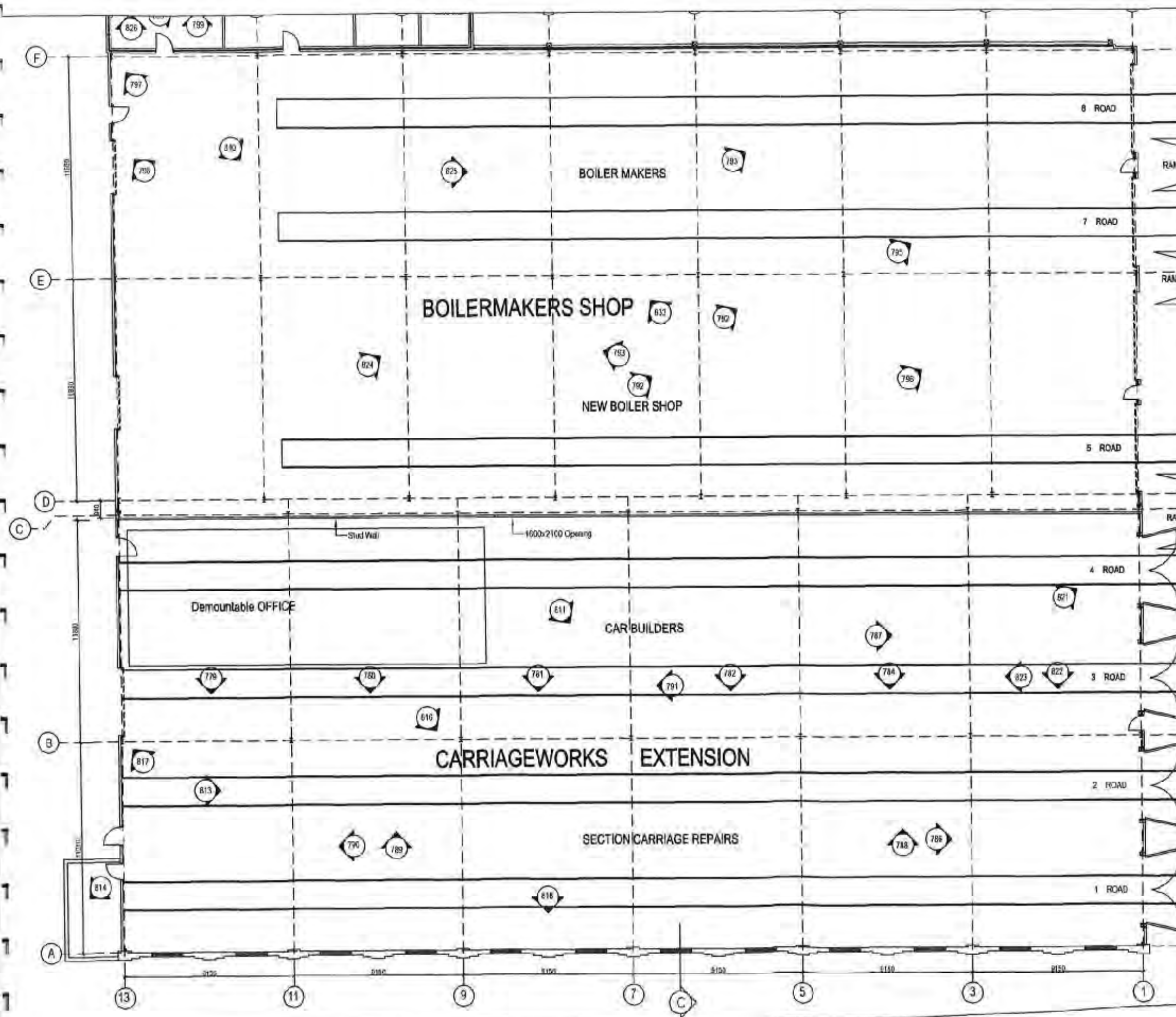
DSC_0787



DSC_0788



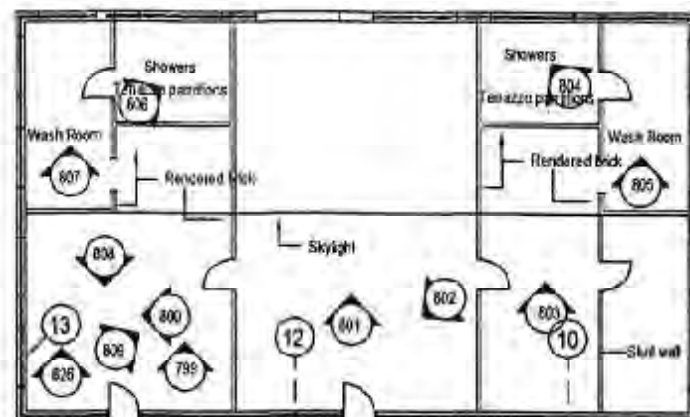
DSC_0878



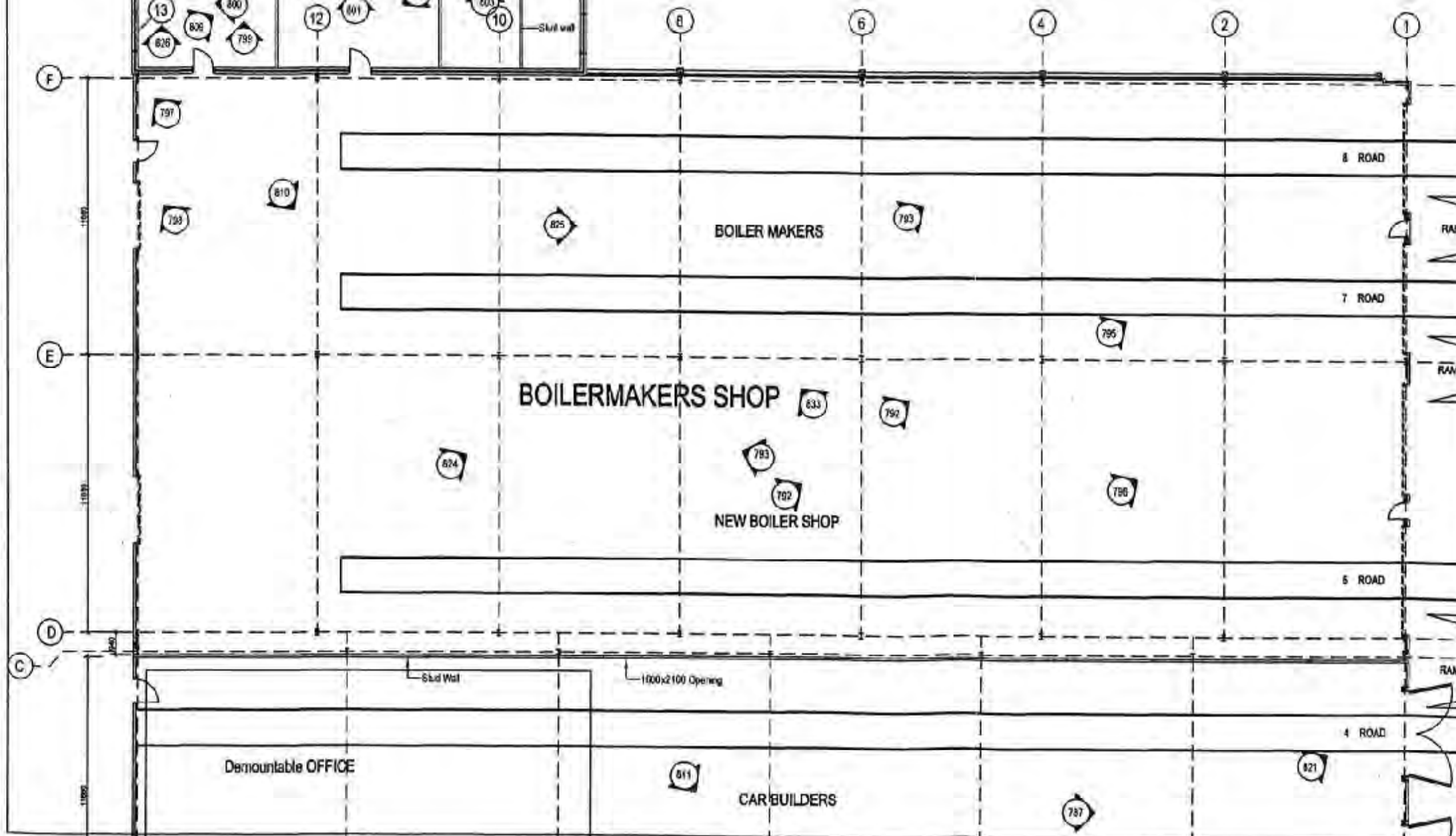
NO. 2
TRAVERSER

D A W B I N ARCHITECTS PTY LTD			
PO Box 5101 TURREAMURRA NSW 2274 TEL: +612 9440 5287 FAX: +612 9440 2430			
CLIENT NSW RAILCORP			
PROJECT CARRIAGE WORKSHOPS EVELEIGH			
PHOTOGRAPHIC REFERENCE PLAN PLAN - CARRIAGE SHOP AND BOILERMAKERS' SHOP			
DRAWN PC	CHECKED	VERIFIED	SCALE 1:100
PROJECT No.			DATE NOV 08
DRAWING No.			ISSUE
02			

AMENITIES ANNEXE



WORKSHOP BUILDING



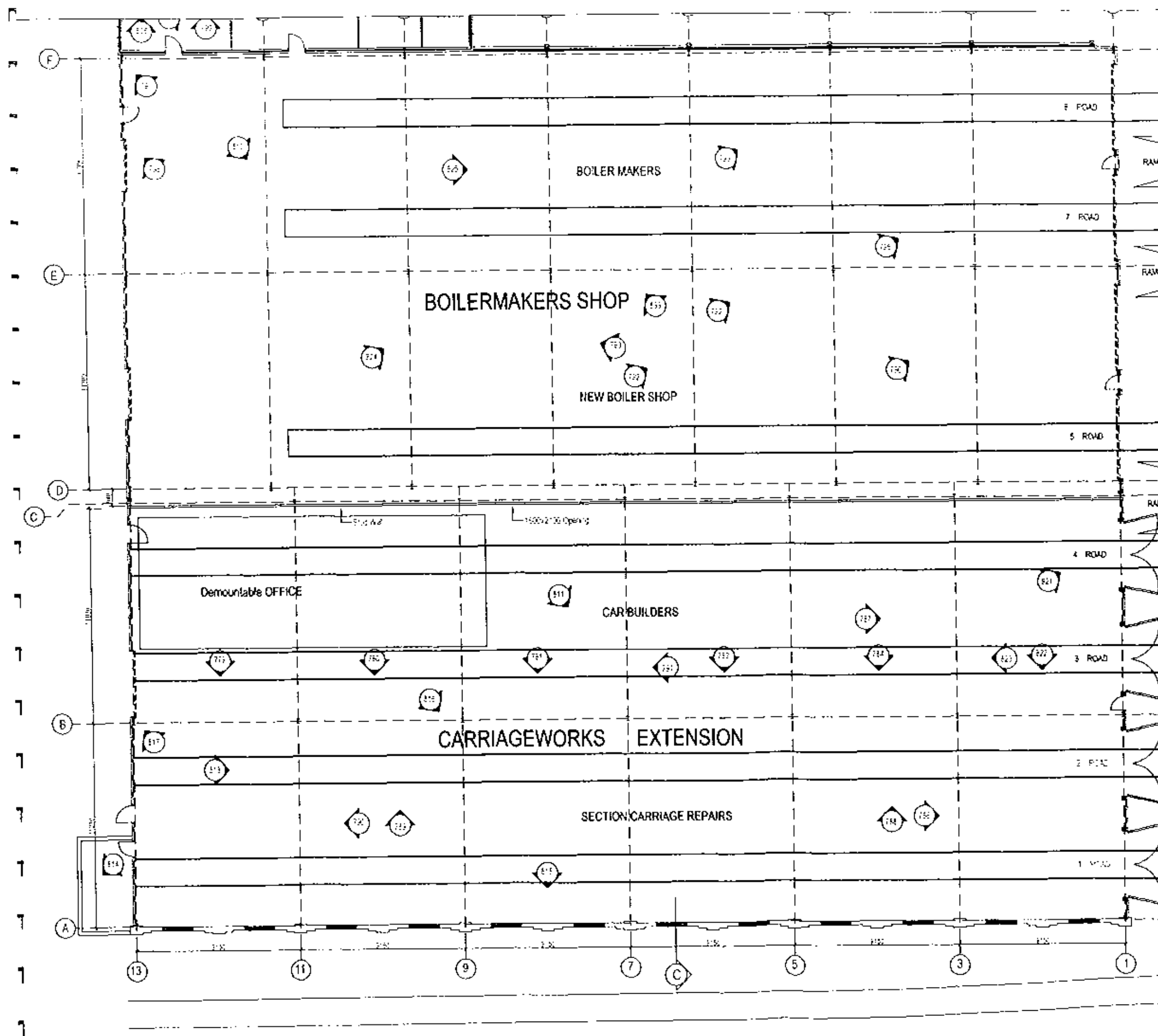
NO. 2
TRAVERSER

D A W B I N ARCHITECTS PTY LTD			
PO Box 5101 TURRAMURRA NSW 2074 TEL: +612 9440 5287 FAX: +612 9440 2430			
CLIENT NSW RAILCORP			
PROJECT CARRIAGE WORKSHOPS EVELEIGH			
PHOTOGRAPHIC REFERENCE PLAN PART PLAN - CARRIAGE SHOP AND BOILERMAKERS' SHOP AMENITIES			
DRAWN PC	CHECK	VERIFIED	SCALE 1:100
PROJECT No.		DATE NOV 08	
DRAWING No.		ISSUE	
03		1	

PART 4 - MEASURED DRAWINGS

Measured Drawings of the western precinct Stores and Workshop buildings comprise A1 size drawings, reduced to A3 as follows:

- 01 Survey (Site Plan)
- 02 Floor Plan Boilermakers Shop and Carriage Shop Extension
- 03 Plan Boilermakers Shop and Amenities Annexe
- 04 Plan Stores 1, 2, 3, and 4
- 05 Elevations 1
- 06 Elevations 2
- 07 Sections



NO. 2
TRAVERSER

DRAWING			
ARCHITECTS PTY LTD			
PO Box 5121 TUGGERAH NSW 2254 TEL: 4512 5443 5287 FAX: 4512 5443 2450			
CLIENT NSW RAILCORP			
PROJECT CARRIAGE WORKSHOPS EVELEIGH			
PHOTOGRAPHIC REFERENCE PLAN PLAN - CARRIAGE SHOP AND BOILERMAKERS' SHOP			
DATE	DESIGN	REVISION	SCALE
11/01/01	11/01/01	11/01/01	1:100
PROJECT No.	11/01/01	DATE	11/01/01
DRAWING No.	11/01/01	ISSUE	1

DP 202534	1	2	3	4	5
DP 795372	1	2	3	4	5
DP 515220	1	2	3	4	5
DP 521652	1	2	3	4	5
DP 995628	1	2	3	4	5
DP 194279	1	2	3	4	5
DP 986708	1	2	3	4	5
DP 995871	1	2	3	4	5
DP 715890	1	2	3	4	5
DP 742663	1	2	3	4	5

SP	DP 1076008	
	DP 778811	
	DP 742802	
	DP 713420	
	DP 1075913	58
	DP 196139	1
	DP 195690	—
58	DP 1076822	
111213	DP 865020	
13	SP 56711	

DP 440773					
DP 904066					
DP 568211			DP 128236		
DP 119097					
DP 804890					
DP 521976			DP 214583		
DP 32735					
2	3	4	5	6	7

[illegible]

WILSON



HOLDSWORTH ST

DAWBIN ARCHITECTS PTY LTD

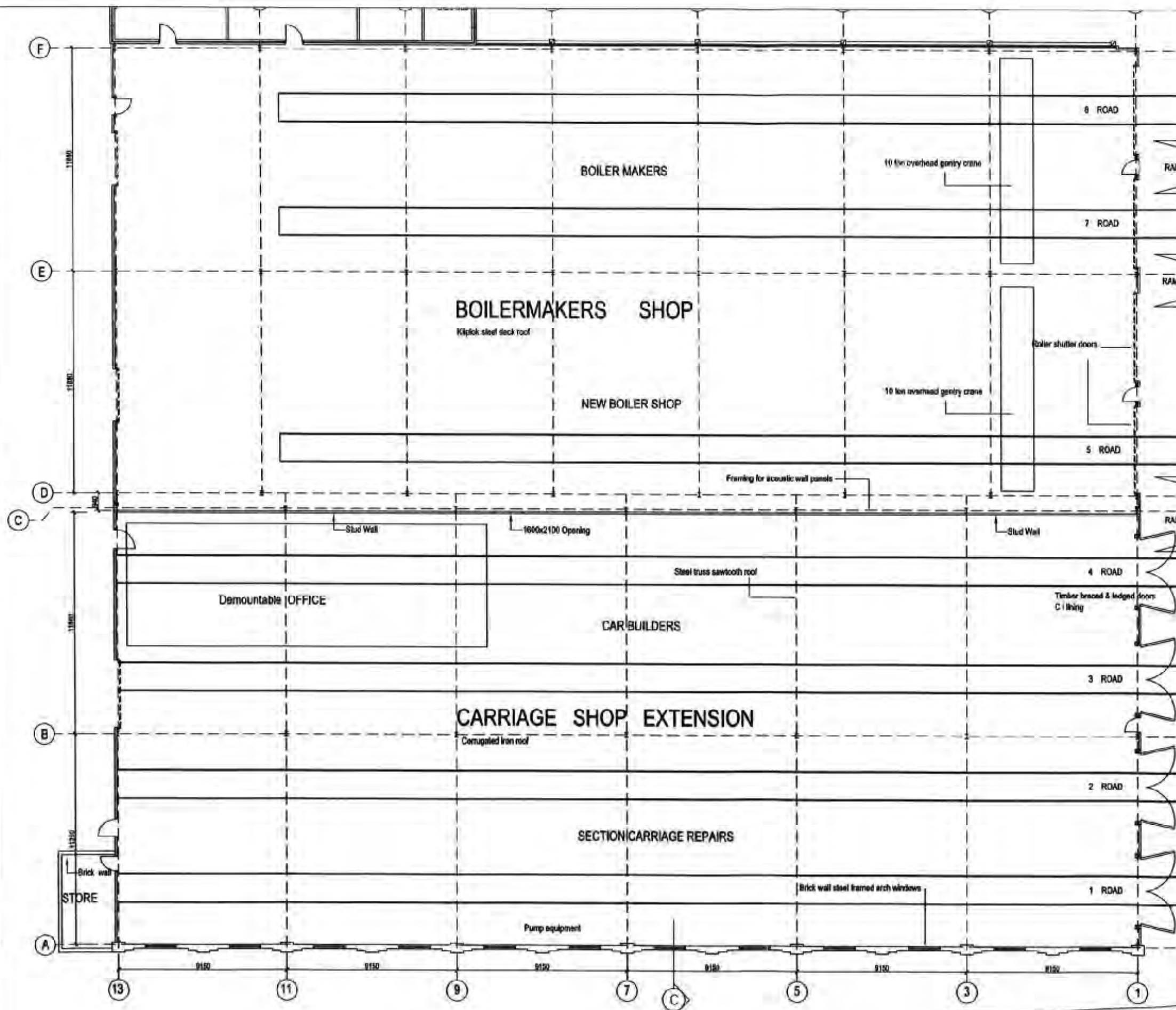
PO Box 5101
TURRAMARRA NSW 2074
TEL: +612 9440 5287 FAX: +612 9440 2430

CLIENT
NSW RAILCORP

PROJECT
CARRIAGE WORKSHOPS EVELEIGH

MEASURED DRAWING
SITE PLAN

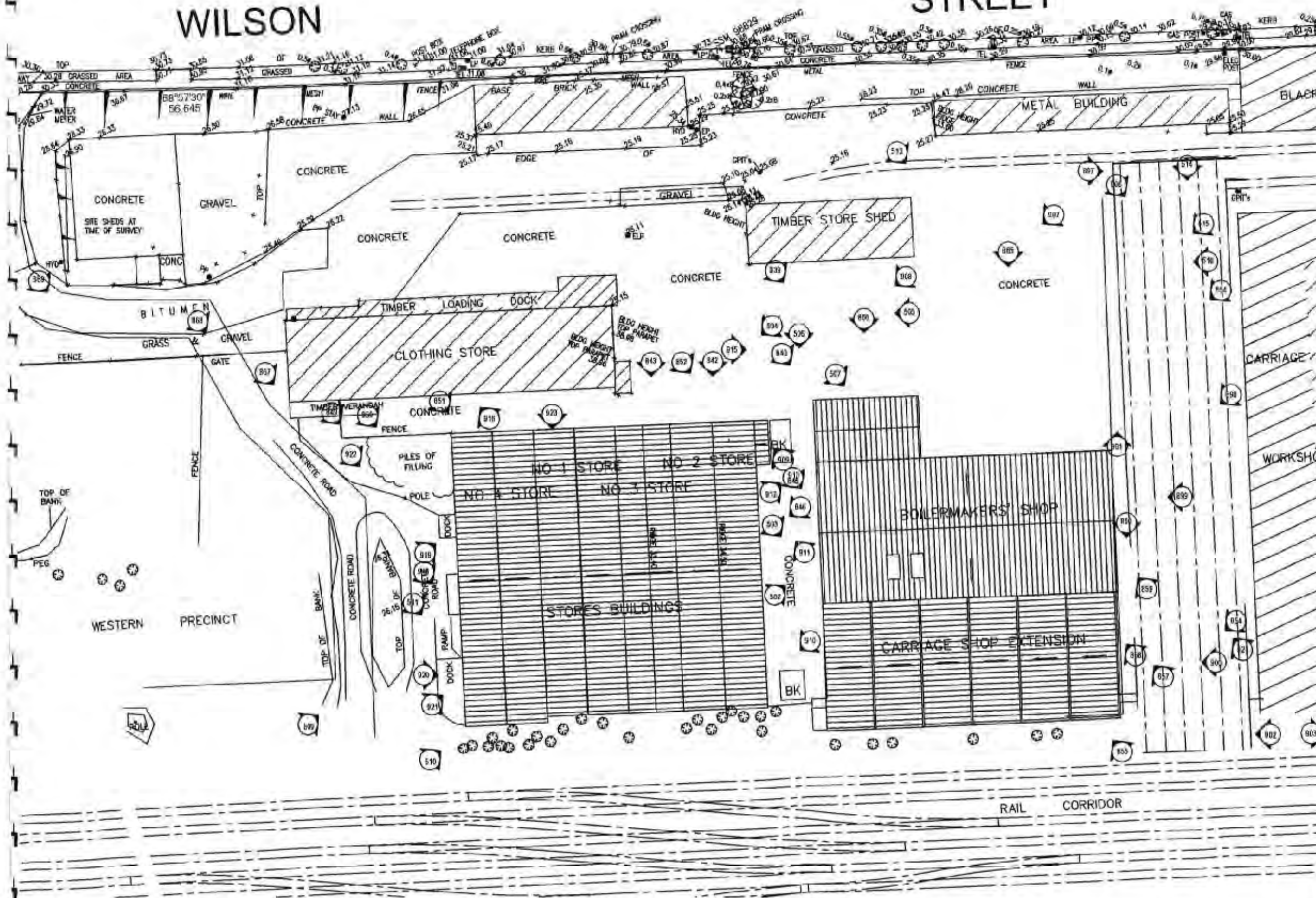
DRAWN PC	DESIGN	VERIFIED	SCALE 1:500
	PROJECT NO.	DATE	
	DRAWING NO. 01	ISSUE	



NO. 2
TRAVERSER

DAWBIN ARCHITECTS PTY LTD PO Box 5101 TURRAMURRA NSW 2074 TEL: +612 9440 5287 FAX: +612 9440 2430			
CLIENT NSW RAILCORP			
PROJECT CARRIAGE WORKSHOPS EVELEIGH			
MEASURED DRAWING PLAN - CARRIAGE SHOP AND BOILERMAKERS' SHOP			
DRAWN PC	CHECKED PC	VERIFIED PC	SCALE 1:500
PROJECT No. -		DATE NOV 08	
DRAWING No 02		ISSUE -	

STREET



1 SITE PLAN

DAWBIN
ARCHITECTS PTY LTD

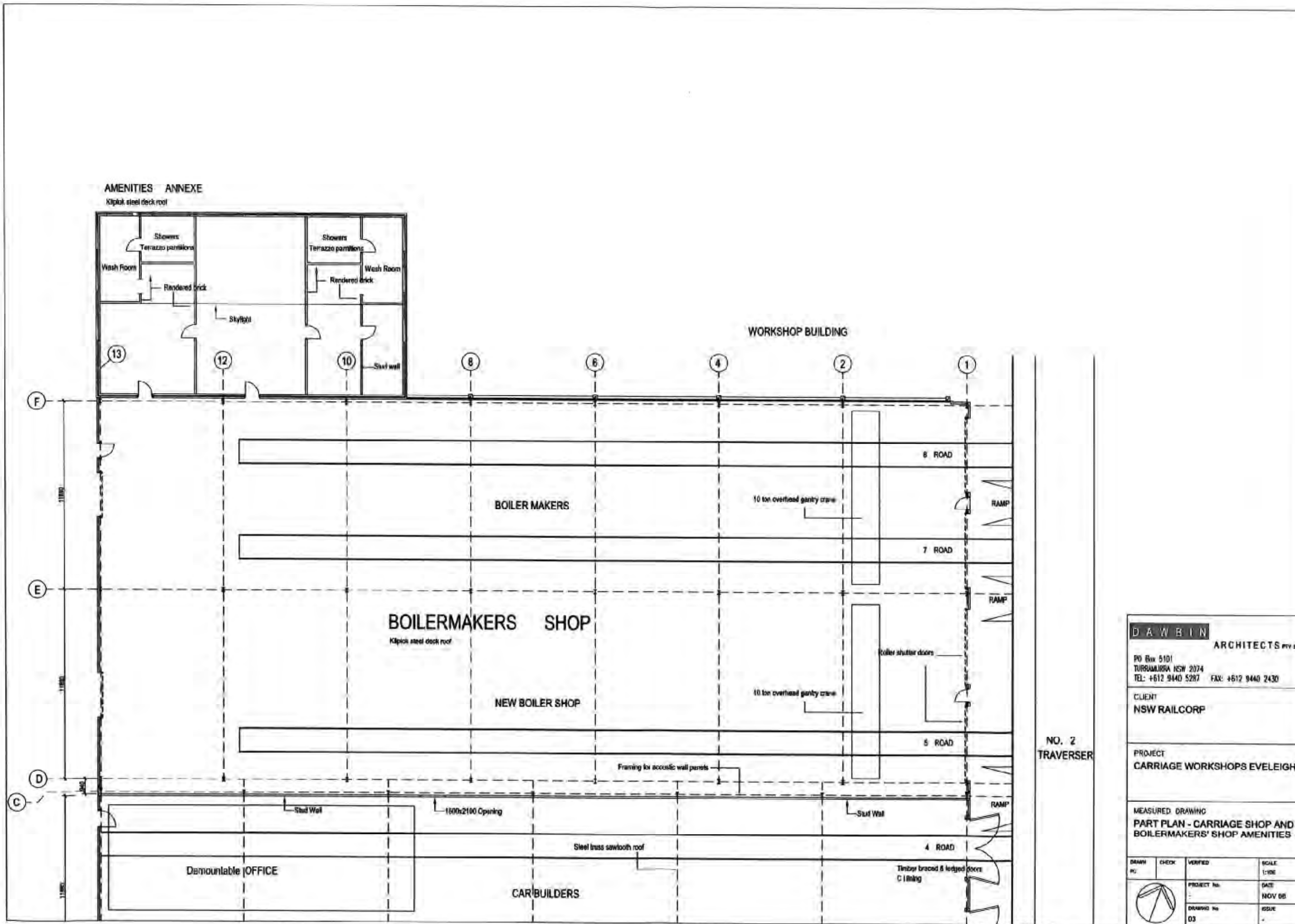
PO Box 5101
TURRAMURRA NSW 2074
TEL: +612 9440 5287 FAX: +612 9440 2430

CLIENT
NSW RAILCORP

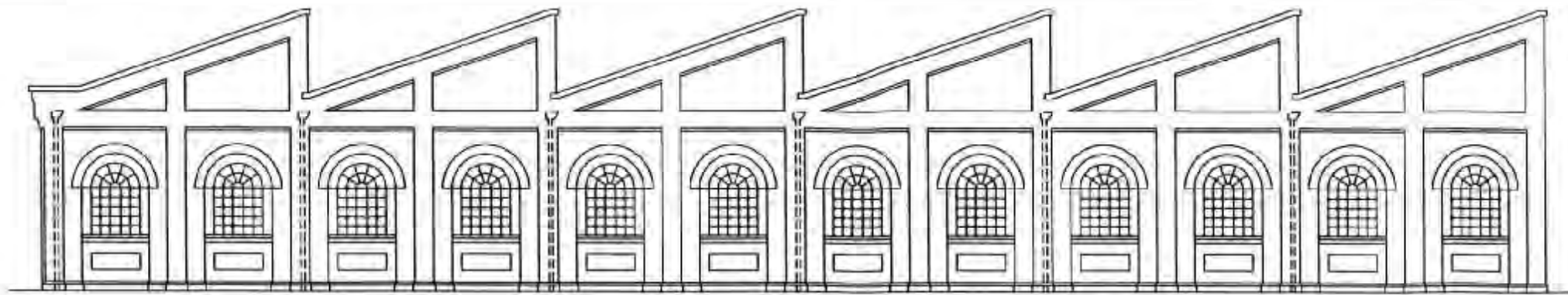
PROJECT
CARRIAGE WORKSHOPS EVELEIGH

PHOTOGRAPHIC REFERENCE PLAN
SITE PLAN

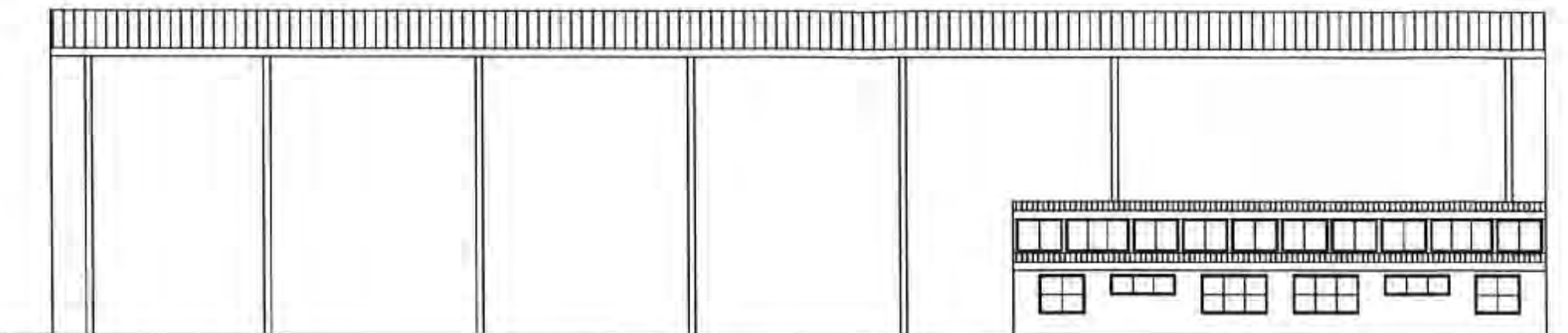
CHURN	CHRG	VIEWED	SCALE
10			1:500
	PROJECT No.	DATE	
	CHURNING No.	ISSUE	



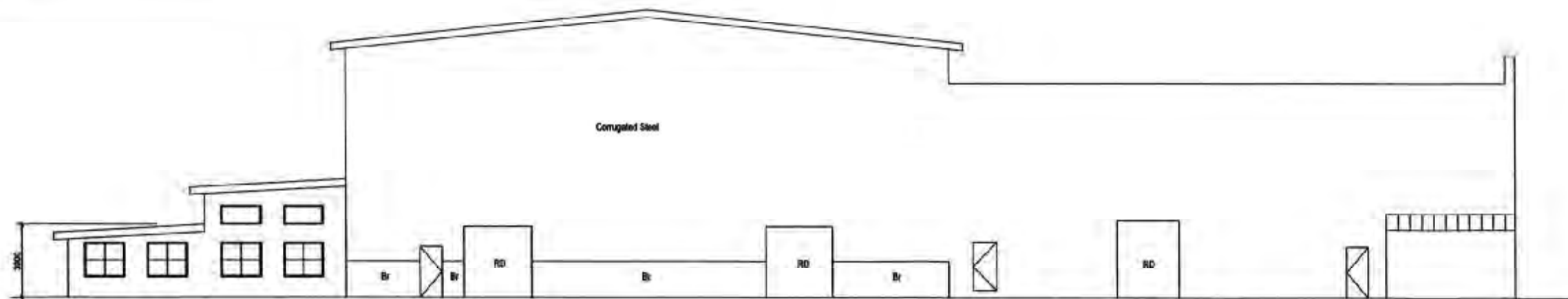
DAWBIN ARCHITECTS Pty Ltd PO Box 5101 TURRAMURRA NSW 2074 TEL: +612 9440 5287 FAX: +612 9440 2430			
CLIENT NSW RAILCORP			
PROJECT CARRIAGE WORKSHOPS EVELEIGH			
MEASURED DRAWING PART PLAN - CARRIAGE SHOP AND BOILERMAKERS' SHOP AMENITIES			
DRAWN BY	CHECK	VERIFIED	SCALE 1:100
		PROJECT No.	DATE NOV 05
		DRAWING No.	ISSUE
		03	1



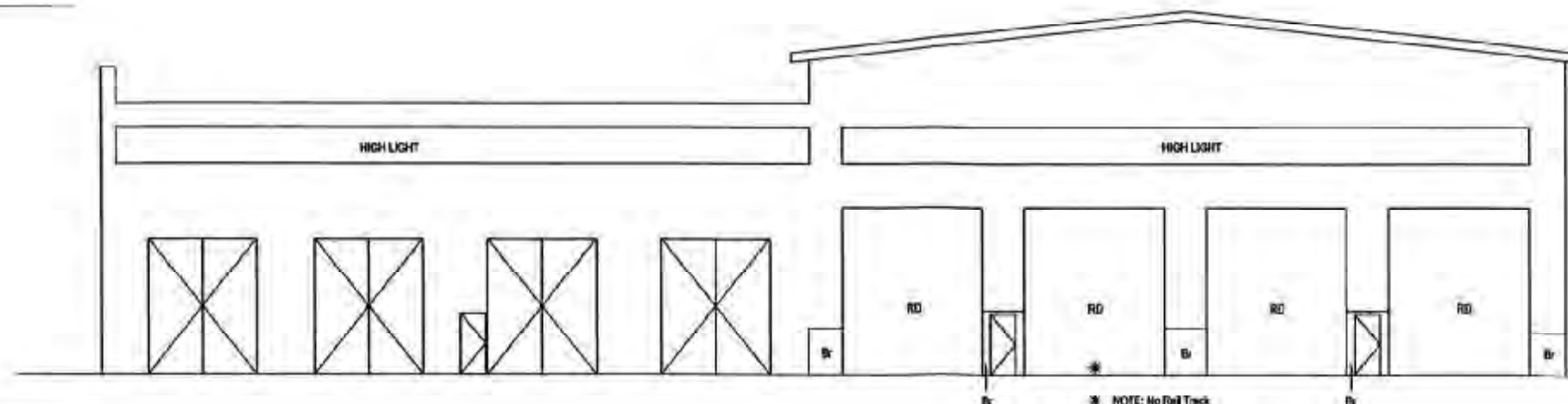
1 SOUTH ELEVATION



2 NORTH ELEVATION



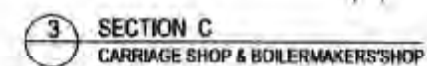
3 WEST ELEVATION



4 EAST ELEVATION

* NOTE: No Rail Track

DAWBIN ARCHITECTS PTY LTD			
PO Box 5101 TURRAMURRA NSW 2374 TEL: +612 9440 5287 FAX: +612 9440 2430			
CLIENT NSW RAILCORP			
PROJECT CARRIAGE WORKSHOPS EVELEIGH			
MEASURED DRAWING ELEVATIONS - CARRIAGE SHOP AND BOILERMAKERS' SHOP			
DRAWN PC	CHECKED	VERIFIED	SCALE 1:100
		PROJECT No. -	DATE NOV 08
		DRAWING No. 05	ISSUE -



DRAWN PC	CHECK	VERIFIED	SCALE 1:1M
		PROJECT No -	DATE NOV 05
		DRAWING No 07	ISSUE -

